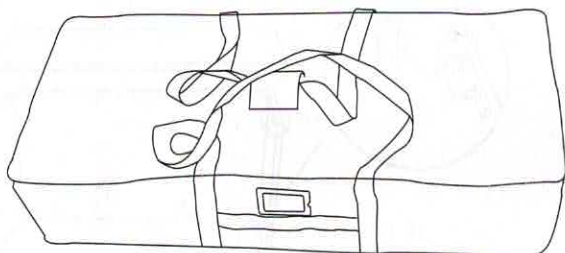


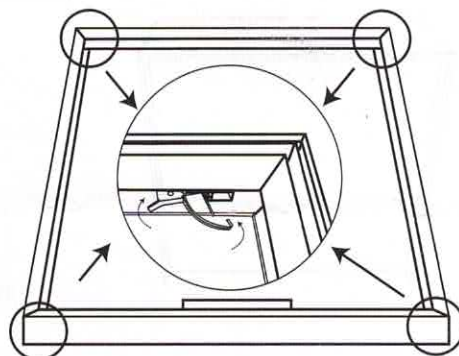
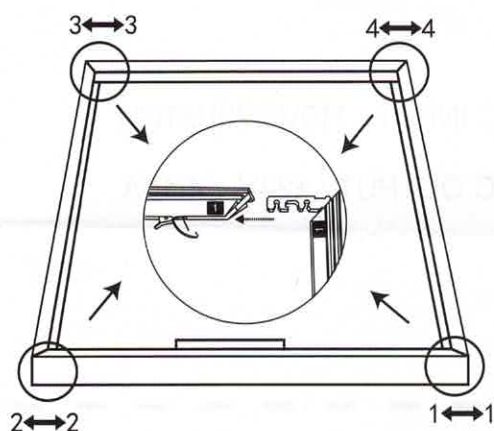
INSTALLATION STEPS



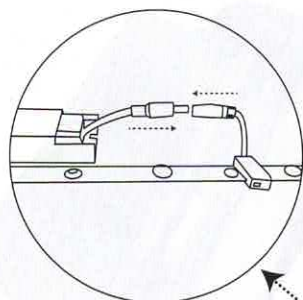
total weight: 20kg

BOM:	Tool-free profiles	×4
	LED curtain and Fabric	×1
	Side board	×2
	Table board	×1
	Shelf in middle	×1
	Power cable	×1

STEP 01

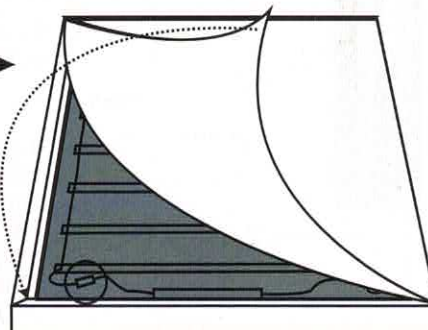
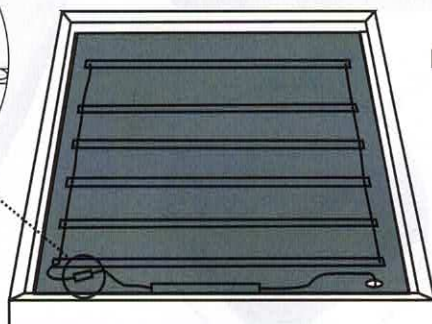


STEP 02



LED curtain

Fabric

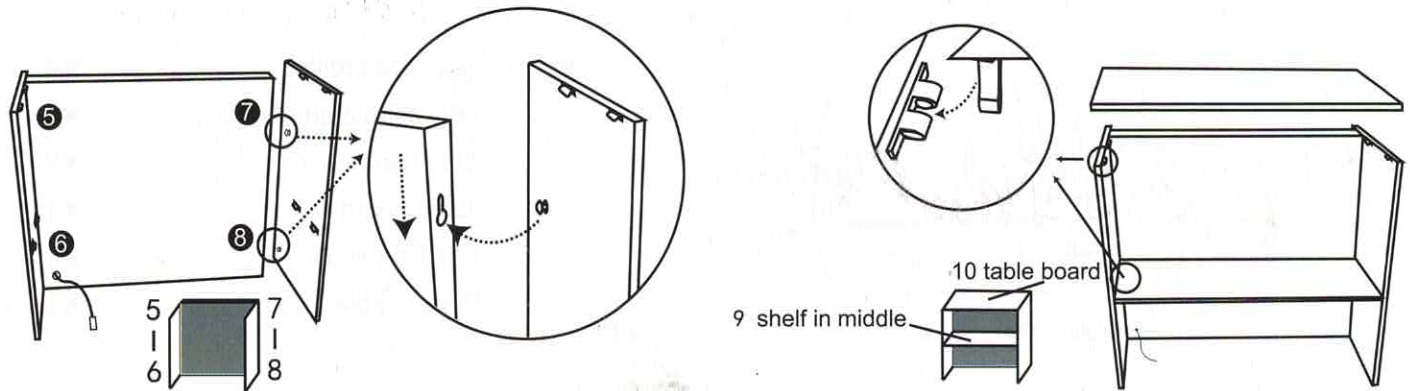


CAUTION:
PLEASE READ THE INSTRUCTIONS BEFORE INSTALLING PRODUCTS

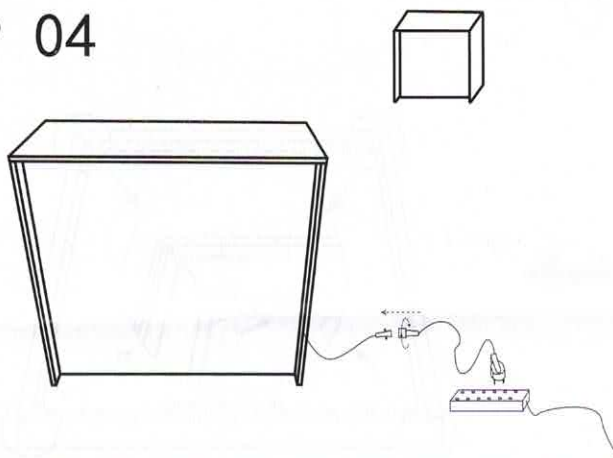
Our products keep upgrading. Rights to change parts reserved.

INSTALLATION STEPS

STEP 03



STEP 04



AC INPUT : 110V-220V \pm 15%

DC OUTPUT : \pm 24V 4.16A



CAUTION:
PLEASE READ THE INSTRUCTIONS BEFORE INSTALLING PRODUCTS